

21.50

36

4.26

36

5.13

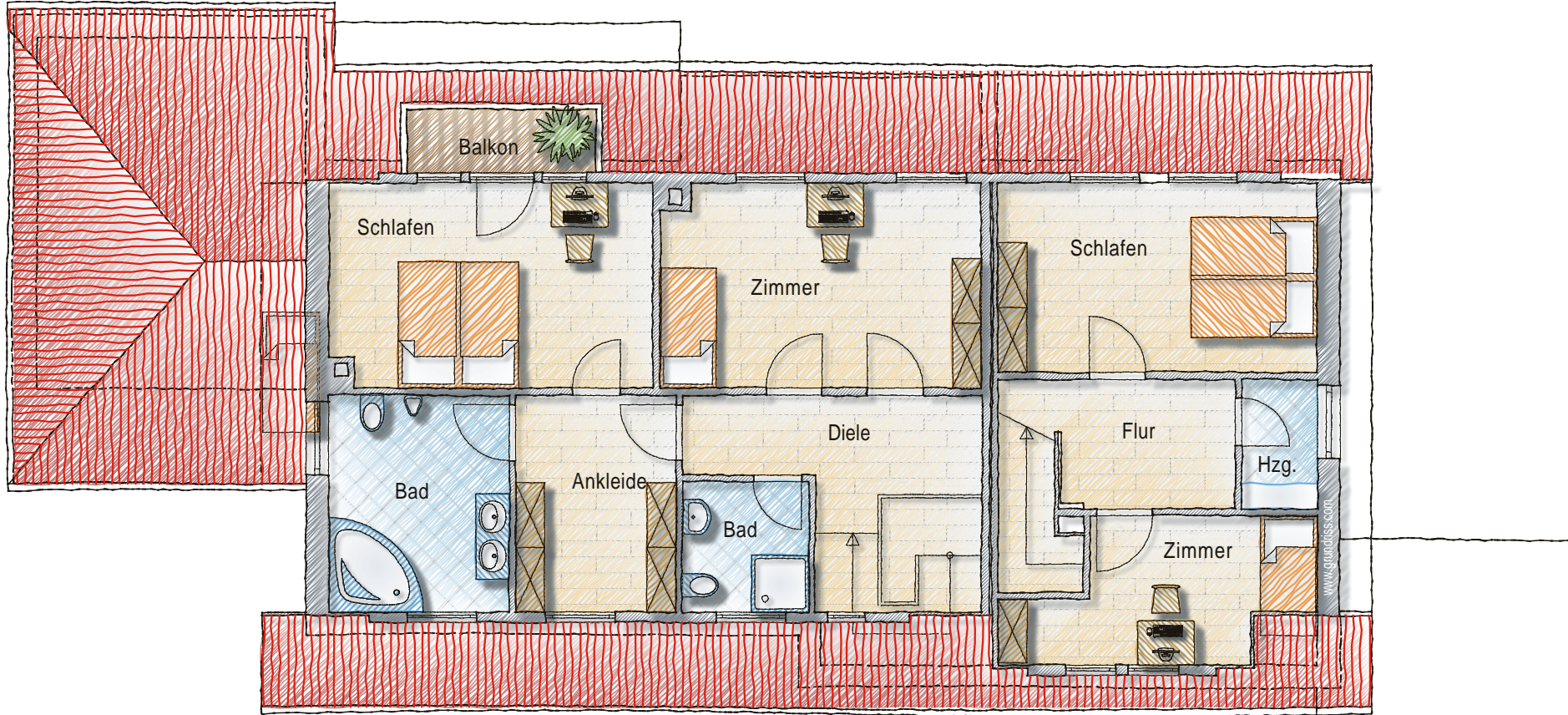
12

5.10

6.18



9.81  
36  
1.93  
36  
3.25  
12  
3.44  
36



36  
3.00  
12  
2.06  
10  
2.37  
36  
8.36

36 2.86 10 2.54 10 2.00 10 2.64 26 1.36 10 3.60 36

16.38